

UF II Digital Abutment

DIO IMPLANT

UFII Digital Abutment

MORE developed than Stock Abutments,
MORE convenient than Customized Abutments!

CEJ Cemento-enamel junction

The Digital Abutment was created based on the CEJ
and thus has an excellent aesthetic appearance.



What makes UFII Digital Abutment so special?

	Stock Abutment	Customized Abutment	Digital Abutment
Making process	Shorter	Longer	Shorter
Time-saving	Increase the chair time	Increase the chair time	Decrease the chair time
Using library	Yes	No	Yes
Customized for the patient's gingiva	No	Yes	Yes
Post area	Small	Wide	Wide
Getting omitted prosthesis	High chance	Low chance	Low chance
Cost	Low cost	High cost	Low cost



Easy to use like Stock Abutment,
customized for the individual like
Customized Abutment

All in One!
UFII Digital Abutment



Clinical benefits of UF II Digital Abutment

Fabricating a prosthesis using Digital Abutment

The ideal Digital Abutment will be determined during the digital design process and sent to the doctor with the surgical guide.



Multi-purpose of Digital Abutment



Function Scan Adapter

Proprietary Protect Cap for Digital Abutment enables gingiva accurate intraoral scanning.



UFII Digital Abutment **Lower Cost** And **Decrease The Chair Time**

Optimized design

An abutment optimized for immediate loading during flapless surgery.

Convenience

The convenience of not needing to detach the abutment when mounting the final prosthetic after implant surgery

High accuracy

Make high accuracy prosthesis designed by intraoral scan and library

Scan Adapter Function

Marking

- L25** · **L** Lower Incisor 2 Cuff Height 5 Post Height
- U25** · **U** Upper Incisor 2 Cuff Height 5 Post Height
- C25** · **C** Canine 2 Cuff Height 5 Post Height
- P25** · **P** Pre-Molar 2 Cuff Height 5 Post Height
- M25** · **M** Molar 2 Cuff Height 5 Post Height

Attention

0.5 unit marking exempted in accordance with marketing
 ex) Cuff 2.5 = 2 / Post 5.5 = 5



Protect Cap
Lock-Groove

Shoulder Margin

UF II Connection



UF II
Connection



UFII Narrow
Connection



Non-Hex



Lower Incisor



Upper Incisor



Canine



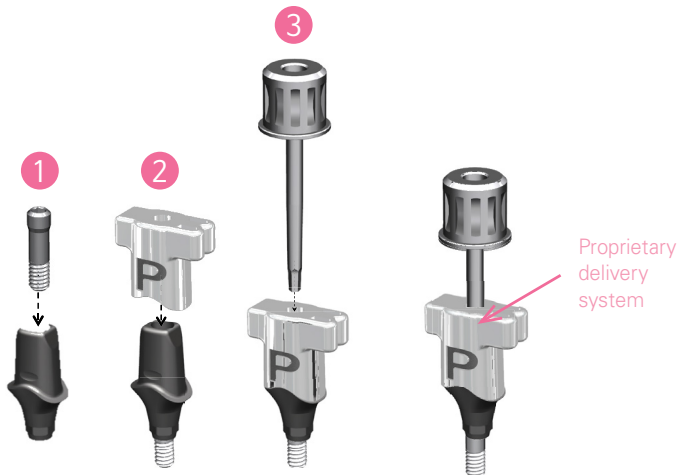
Pre-Molar



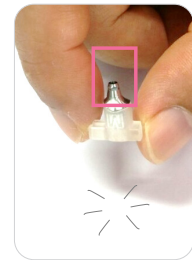
Molar

Cross Section					
Cervical Margin Cross Section					
Facial Side					
Connection	UF(II) Narrow	UF(II) Narrow / UF(II)	UF(II)	UF(II)	UF(II)
Cervical Margin Dimension (Mesiodistal x faciolingual)	5 X 5.2	6.1 X 5.7	5.3 X 6.3	5.8 X 6.8	7.3 X 7.8
Ratio (%)	70%	70% / 85%	85%	85%	85%

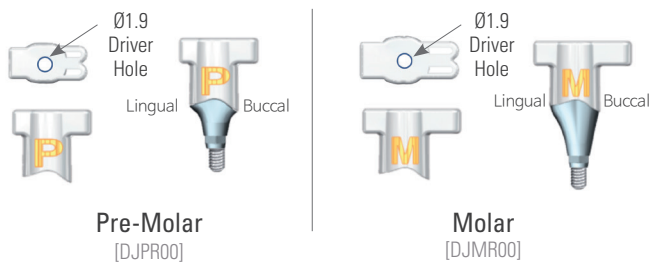
Connecting Hex is easy and simple



Easier delivery to the intraoral area (Only require the driver)



Carrier prevents the screw from dropping into the patient's throat to mouth



Easier handling and a more precise connection

Digital Abutment Line-Up

N			N			R			R			R			R				
No.	Cuff	Post	Lower Incisor	Upper Incisor	Upper Incisor	No.	Cuff	Post	Canine	No.	Cuff	Post	Pre-Molar	Post	Molar	No.	Cuff	Post	
1	1.5	4.0				2	2.5	5.5		1	1.5	4.0				2	2.5	7.0	
3	3.5					3	3.5			3	3.5								
4	4.5					4	4.5	4	4.5										
5	5.5					5.5				7	2.5	7.0		5	1.5	5.5			
6	1.5	7	2.5	6	2.5					6	2.5								
7	2.5	8	3.5	7	3.5					7	3.5								
8	3.5	7.0								8	3.5	7.0		8	4.5	7.0			
9	4.5					5	1.5	6	2.5	6	2.5								
10	5.5	6	2.5	7	3.5	7	3.5												

DIO IMPLANT
www.dioimplant.com